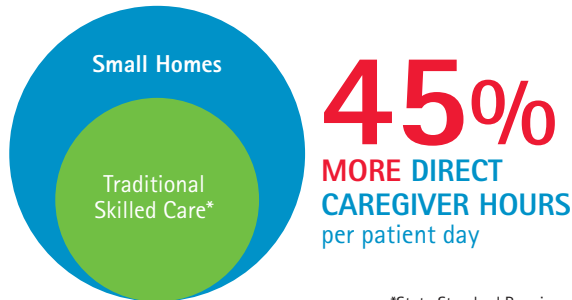


The Small Homes Difference



*State Standard Requirement

MORE INDIVIDUALIZED CARE



75% LESS STAFF CALL-INS⁺

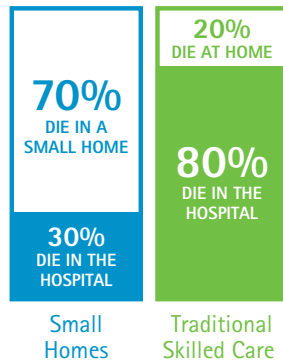


⁺Unavailable to Work

LOWER STAFF TURNOVER



BETTER END-OF-LIFE EXPERIENCES



100% SATISFACTION RATE (above good or excellent)



Data reflected above compare outcomes achieved within St. John's Small Homes Model with regional averages of outcomes achieved at skilled care facilities not using a small homes model.

A Small Homes Comparison

Traditional Skilled Care	Small Homes
Medicine Carts →	Medicine Cabinets
Nurses Stations →	Mobile Work Stations
Staff-Only Spaces →	Unrestricted Access to All Spaces for Elders
Set Times for Elder Activity →	Continuous Elder Engagement
Served Dining Experience →	Family Kitchen and Meal Experience
Narrowly Defined Roles for Staff →	Universal Skill Sets for All Staff Caregivers
Hierarchical Leadership Structure; Top-Down Management →	Elder Decision-Making; Team Leadership
Medical Scrubs →	Professional, Home-Environment Attire



stjohnsliving.org