

## Unbundled Apartments at Briarwood and Chestnut Court

Independent Living with à la carte services

### Apartment Features

**Security** staff is on duty 24 hours each day.

Apartments ranging from **650-950 square feet**

**Fully equipped kitchen** with refrigerator, electric range, microwave, dishwasher, and disposal

In-house **personal emergency response system** with motion detector

Additional **storage space** within building

**Cable TV**

**Hookup for stackable washer and dryer;** community laundry rooms available at no extra charge

Gas **heat and hot water included** (electricity is additional)

**Maintenance-free living,** including lawn care, snow removal, and trash pickup

**All amenities of St. John's Meadows and Brickstone by St. John's** are available, along with **priority access** to St. John's Home.

### Services (à la carte)

- Transportation (personal and medical appointments)
- Housekeeping and flat linen service
- Fine dining at the Briarwood
- Casual dining at the Market Café
- Guest suite accommodations
- Garages (based on availability)

### St. John's Campus Amenities

- An array of social, educational, and entertainment programs
- Libraries; Gift shop
- Computer room (Wi-Fi access in common areas)
- UR Medicine Laboratory
- Indoor, heated swimming pool
- Fitness room; Billiard room
- Hair salon
- Wood working shop
- Fishing ponds (catch and release only)
- Activity, multi-purpose, and club rooms
- Private dining rooms

### 2024 Rent Schedule\*

1 bedroom	\$2,434 / month
1 bedroom with patio or balcony	\$2,486 / month
1 bedroom with den	\$2,765 / month
1 bedroom with den, patio/balcony	\$2,817 / month
2 bedroom, 1 bath	\$2,932 / month
2 bedroom, 1 bath with patio/balcony	\$3,262 / month
2 bedroom, 2 bath with patio/balcony	\$3,372 / month
2 bedroom, 2 bath	\$3,519 / month

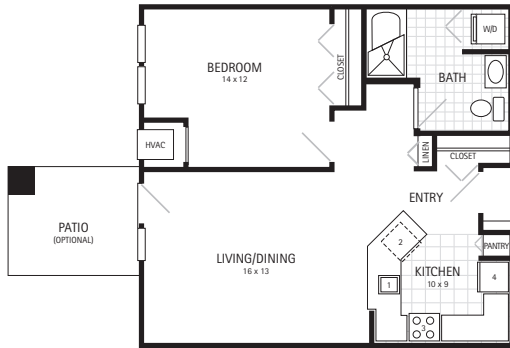
*No second person fee*

*\*Briarwood Apartments: Add \$75/month. Electricity and a stackable washer/dryer are provided.*

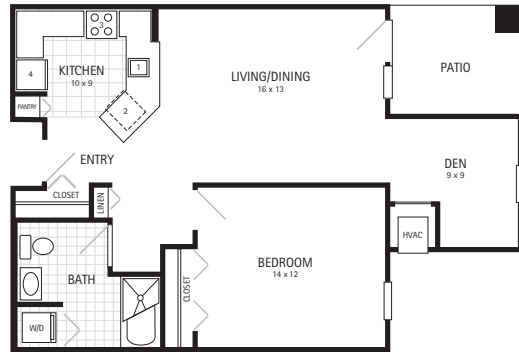
# Unbundled Apartments at Briarwood and Chestnut Court

## Sample Floor Plans

Further floor plans are available when you meet with a  
St. John's Meadows community representative.



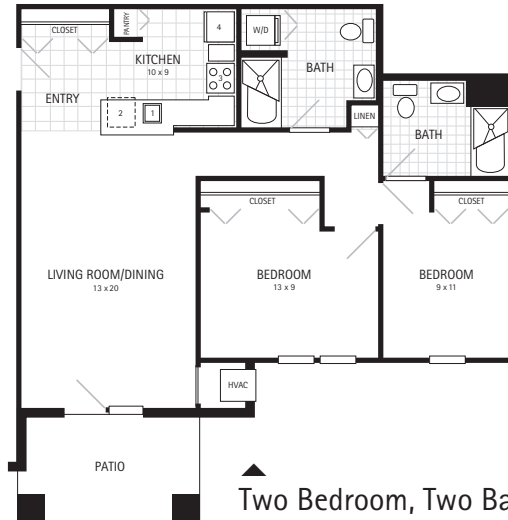
One Bedroom  
650 Square Feet



One Bedroom with Den  
760 Square Feet



Two Bedroom, One Bath  
880 Square Feet



Two Bedroom, Two Bath  
910 Square Feet



[stjohnsliving.org](http://stjohnsliving.org)

1 Johnsarbor Drive West, Rochester, NY 14620 • 585-442-1300