

Unbundled Apartments at Briarwood and Chestnut Court

Independent Living with à la carte services

Apartment Features

Apartments ranging from **650-950 square feet**

Fully equipped kitchen with refrigerator, electric range, microwave, dishwasher, and disposal

In-house **personal emergency response system** with motion detector

Additional **storage space** within building

Cable TV, channels 2-69

Hookup for stackable washer and dryer; community laundry rooms available at no extra charge

Gas **heat and hot water included** (electricity is additional)

Maintenance-free living, including lawn care, snow removal, and trash pickup

All amenities of St. John's Meadows are available, along with **priority access** to St. John's Home

Services (à la carte)

- Transportation (personal and medical appointments)
- Weekly housekeeping and flat linen service
- Fine dining at the Briarwood
- Casual dining at the Market Café
- Guest suite accommodations
- Garages (based on availability)

St. John's Campus Amenities

- Security, 24/7 access
- An array of social, educational, and entertainment programs
- Libraries; Gift shop
- Computer room (Wi-Fi access in common areas)
- UR Medicine Laboratory
- Indoor, heated swimming pool
- Fitness room; Billiard room
- Hair salon; Massage therapy
- Wood working shop
- Fishing ponds (catch and release only)
- Activity, multi-purpose, and club rooms
- Private dining rooms

2023 Rent Schedule*

1 bedroom	\$2,330 / month
1 bedroom with patio or balcony	\$2,380 / month
1 bedroom with den	\$2,647 / month
1 bedroom with den, patio/balcony	\$2,697 / month
2 bedroom, 1 bath	\$2,735 / month
2 bedroom, 1 bath with patio/balcony	\$3,123 / month
2 bedroom, 2 bath with patio/balcony	\$3,228 / month
2 bedroom, 2 bath	\$3,369 / month

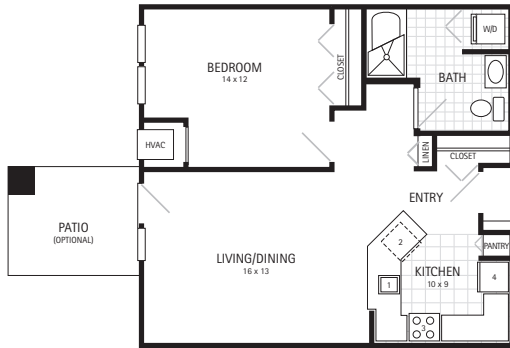
No second person fee

*Briarwood Apartments: Add \$75/month. Electricity and a stackable washer/dryer are provided.

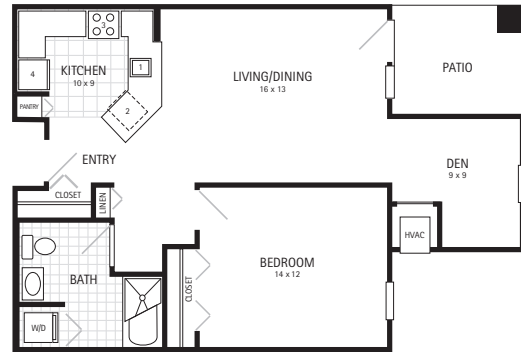
Unbundled Apartments at Briarwood and Chestnut Court

Sample Floor Plans

Further floor plans are available when you meet with a
St. John's Meadows community representative.



One Bedroom
650 Square Feet



One Bedroom with Den
760 Square Feet



Two Bedroom, One Bath
880 Square Feet



Two Bedroom, Two Bath
910 Square Feet



stjohnsliving.org

1 Johnsarbor Drive West, Rochester, NY 14620 • 585-442-1300