



BRICKSTONE

Contemporary Living by St. John's



Town Homes

Features

Areas to garden, if you choose

Scheduled **transportation** and **community activities**

Dinner delivery and **catering** options for entertaining guests

Concierge assistance

Community rooms for entertaining family, friends, clubs, and groups (with Wi-Fi access)

Town Homes are nestled in a **private, village-like setting** adjacent to 17 acres of preserved wetlands

Security staff is on duty 24 hours each day

Enjoy **amenities at St. John's Meadows** in addition to those on site, along with **priority access** to St. John's Home

Two-Story Town Homes Include

- Two bedrooms, two baths
- First floor master suite
- Front porch, 2nd story balcony and back patio
- Attached, two-car garage
- Floor plans average 1,550 square feet
- Gas-burning fireplace
- Cathedral ceilings
- Full-size GE Profile washer and dryer
- Beautifully designed, fully equipped, eat-in kitchen with state-of-the-art GE Profile appliances, quartz countertops, and ceramic tile as standard finish
- Cable TV, channels 2-69
- Interior and exterior maintenance
- Lawn care, snow removal, water, and refuse collection

Additional Services (à la carte)

- Variety of dining options available both on-site at the Village Square and at St. John's Meadows
- Housekeeping services
- PERS (Personal Emergency Response System)
- Transportation for medical and personal appointments
- Handyman maintenance services for custom requests

St. John's Meadows Campus Amenities

- An array of social, educational, and entertainment programming
- Libraries; Gift shop; Salon; Massage therapy
- Computer room (Wi-Fi access in common areas)
- Indoor, heated swimming pool
- Fitness room; Billiard room; Wood working shop; Fishing ponds
- Activity, multi-purpose, and club rooms; Private dining rooms

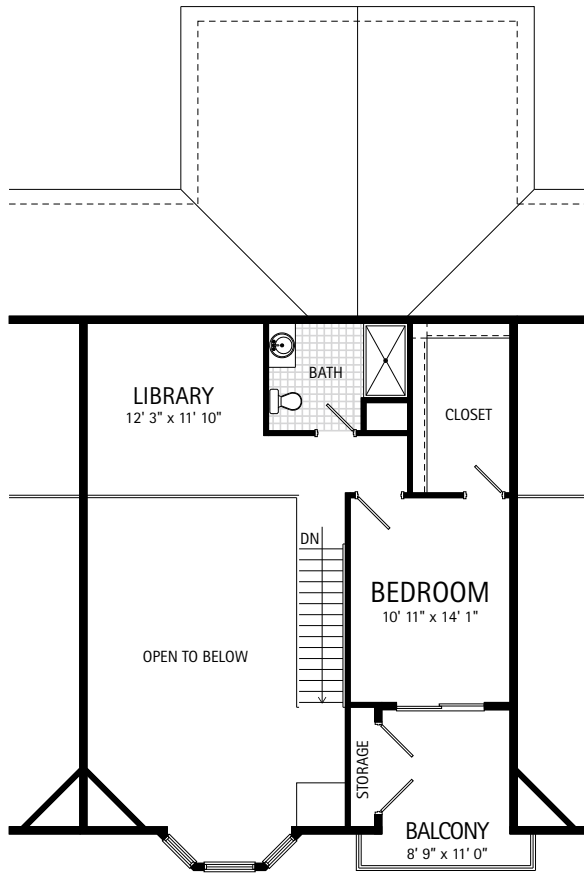
2016 Pricing

\$3,579 / month

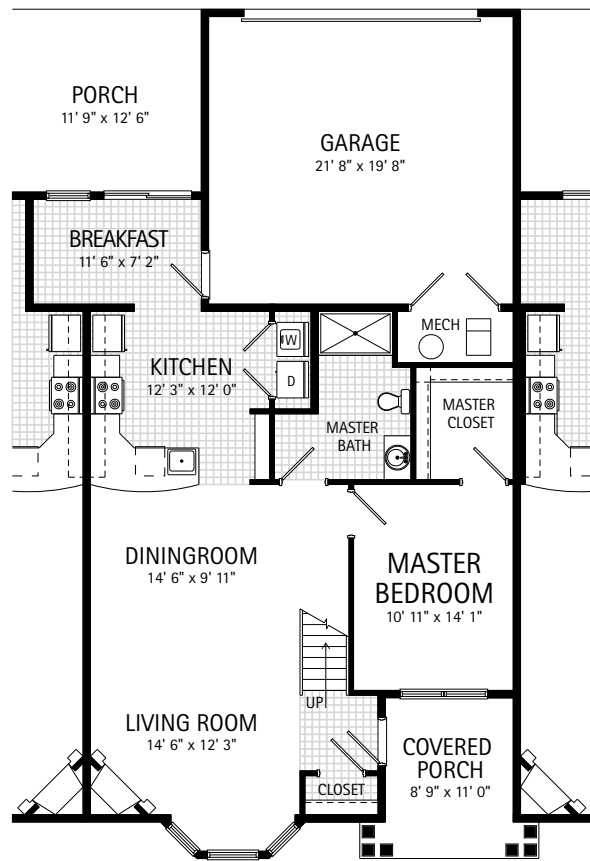
All leases are month-to-month. There is no entrance fee.

Town Homes Sample Floor Plans

Further floor plans are available when you meet with a
Brickstone community representative.



Second Floor



First Floor

Two Bedroom, Two Bath with Patio and Balcony
1,550 Square Feet



stjohnsliving.org

1325 Elmwood Avenue, Suite 1000, Rochester, NY 14620 • 585-271-1000